



**ALASKA DIVISION OF HOMELAND SECURITY &
EMERGENCY MANAGEMENT**
SITUATION REPORT 24-087 • March 27, 2024



Toll-Free 1.800.478.2337

Anchorage Area 907.428.7000

SEOC 907.428.7100

<p><u>SEOC Preparedness Level</u> Level 1 – Routine Operations.</p>	<p align="center">http://ready.alaska.gov</p>	<p><u>National Terrorism Advisory System:</u> Read the NTAS Bulletin here</p>
<p>Maritime Security (MARSEC) Level:1- Minimum Appropriate Security Measures</p>	<p>WHO Novel Coronavirus Pandemic (COVID-19): 2019 Novel Coronavirus</p>	<p><u>Alaska Military Installation Force Protection Level:</u> FPCON Bravo</p>

(Significant changes from previous situation reports are red.)

Significant Issues:

Tsunami Warning Test March 27th, 2024

SEOC in partnership with the National Tsunami Warning center will conduct the annual Tsunami Warning Drill today. A live tsunami test code will be sent out as part of this drill to ensure messaging channels are functional. DHSEM staff will be recalled to the SEOC to activate the tsunami warning response procedure to include contacting communities via landline phone and the Alaska Warning Alert System (AKWAS) phone to ensure the message was received and to verify community phone numbers and points of contact.

State of Alaska Department of Health (DOH)

The DOH stands ready to assist with all aspects of public health and, in the event of a public health emergency, is supported by the SEOC and other state departments as required.

For current information, see: <https://health.alaska.gov/dph/Pages/default.aspx>
<https://health.alaska.gov/dph/Emergency/Pages/prepared/default.aspx>

NTAS Bulletin

The U.S. Department of Homeland Security issued an updated National Terrorism Advisory Bulletin on May 24, 2023. The current and expired bulletins can be viewed at the below link.

<https://www.dhs.gov/national-terrorism-advisory-system>

Travel Alerts and Conditions

For current driving conditions, dial 511 or visit: <https://511.alaska.gov/>

Barry Arm Landslide / Tsunami Risk

For the latest information on the Barry Arm Landslide and Tsunami risk, click here:

<https://diggs.alaska.gov/hazards/barry-arm-landslide.html>

Earthquakes

United States Geological Service (USGS) Earthquake Information: <http://earthquake.usgs.gov/>
National Tsunami Warning Center: <http://tsunami.gov/>

Alaska Volcanoes

Great Sitkin Alert Level: Watch and Aviation Color Code: **Orange**
Shishaldin Alert Level: Advisory and Aviation Color Code: **Yellow**

For Alaska Volcano updates, go to: <https://www.avo.alaska.edu/>

Air Quality Index (AQI) Advisories

For the most up-to-date Air Quality Index Advisories:
<http://dec.alaska.gov/Applications/Air/airtoolsweb/Home/Index>

Spills of Oil and Hazardous Substances

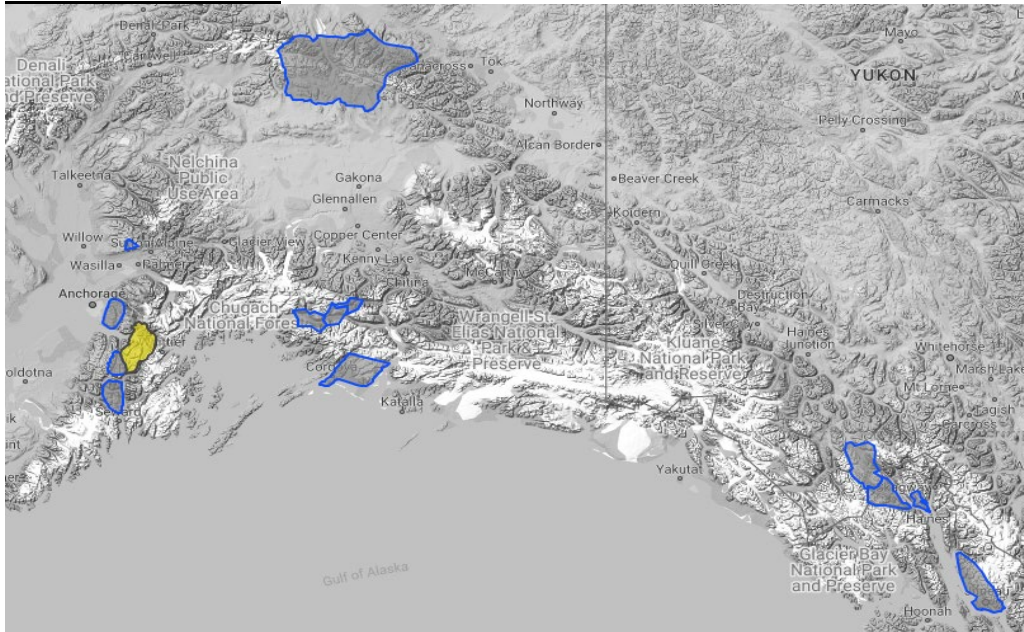
The Alaska Division of Environmental Conservation (ADEC) Spill Prevention and Response page is located at:
<https://dec.alaska.gov/spar/>

Alaska Cyber Security Information

State Employees may sign up for cybersecurity notifications and alerts at
<https://oit.alaska.gov/security>

Cybersecurity and Infrastructure Security Agency (CISA)-Cybersecurity Services and Tools:
www.cisa.gov/free-cybersecurity-services-and-tools

Avalanche Hazard

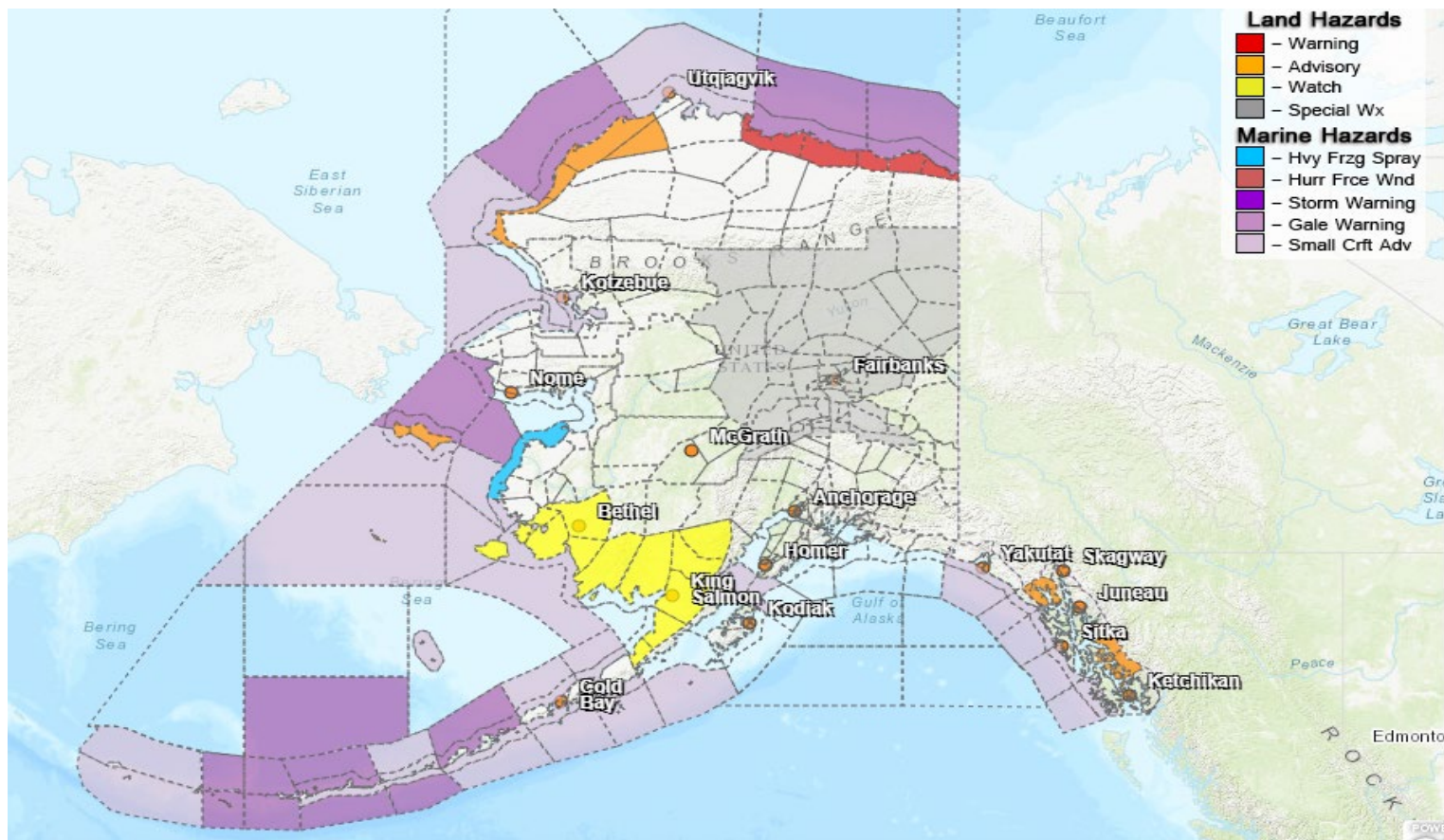


Travel in avalanche terrain is not recommended. Avoid being on or beneath all steep slopes.

Turnagain Pass- Moderate at all elevations

For information and the most current avalanche conditions, go to <https://alaskasnow.org>

Significant Weather:



Special Weather Statement

- **South Slopes of The Eastern Brooks Range, South Slopes of The Central Brooks Range, Upper Koyukuk Valley, Dalton Highway Summits, Yukon Flats, White Mountains and High Terrain South of the Yukon River, Delta Junction, Upper Chena River Valley, Tanana Flats, Eielson AFB and Salcha, Goldstream Valley and Nenana Hills, Chatanika River Valley, Two Rivers, Fairbanks, Metro Area, Nenana, Central Interior-** snow and colder weather incoming
- **Southern Denali Borough, Eastern Alaska Range-**pattern change with heavy snow
- **Northern Denali Borough, Eastern Alaska Range-**very strong winds in the AK Range Passes

Blizzard Warning

- **Central Beaufort Sea Coast-**until 10pm this evening
- **Eastern Beaufort Sea Coast-**until 10am Thursday

Dense Fog Advisory

- **Petersburg Borough, City and Borough of Wrangell, Glacier Bay-**until 10am this morning

Winter Weather Advisory

- **Northwest, Western Arctic Coast-** until noon today

Winter Storm Watch

- **Bristol Bay, Kuskokwim Delta-**Thursday afternoon until Friday evening

For more information and the most current weather, Watches / Warnings / Advisories go to:
<https://www.weather.gov/arh/>

The Next Situation Report will be **March 28, 2024**. A significant change in the situation or the threat level will prompt an interim report. This report is posted on the internet at <https://ready.alaska.gov/sitrep>.

To register for email distribution, go to <http://list.state.ak.us/mailman/listinfo/dhsem.situation.report>. Direct questions regarding this report to the SEOC at 907-428-7100 or seoc@alaska.gov.